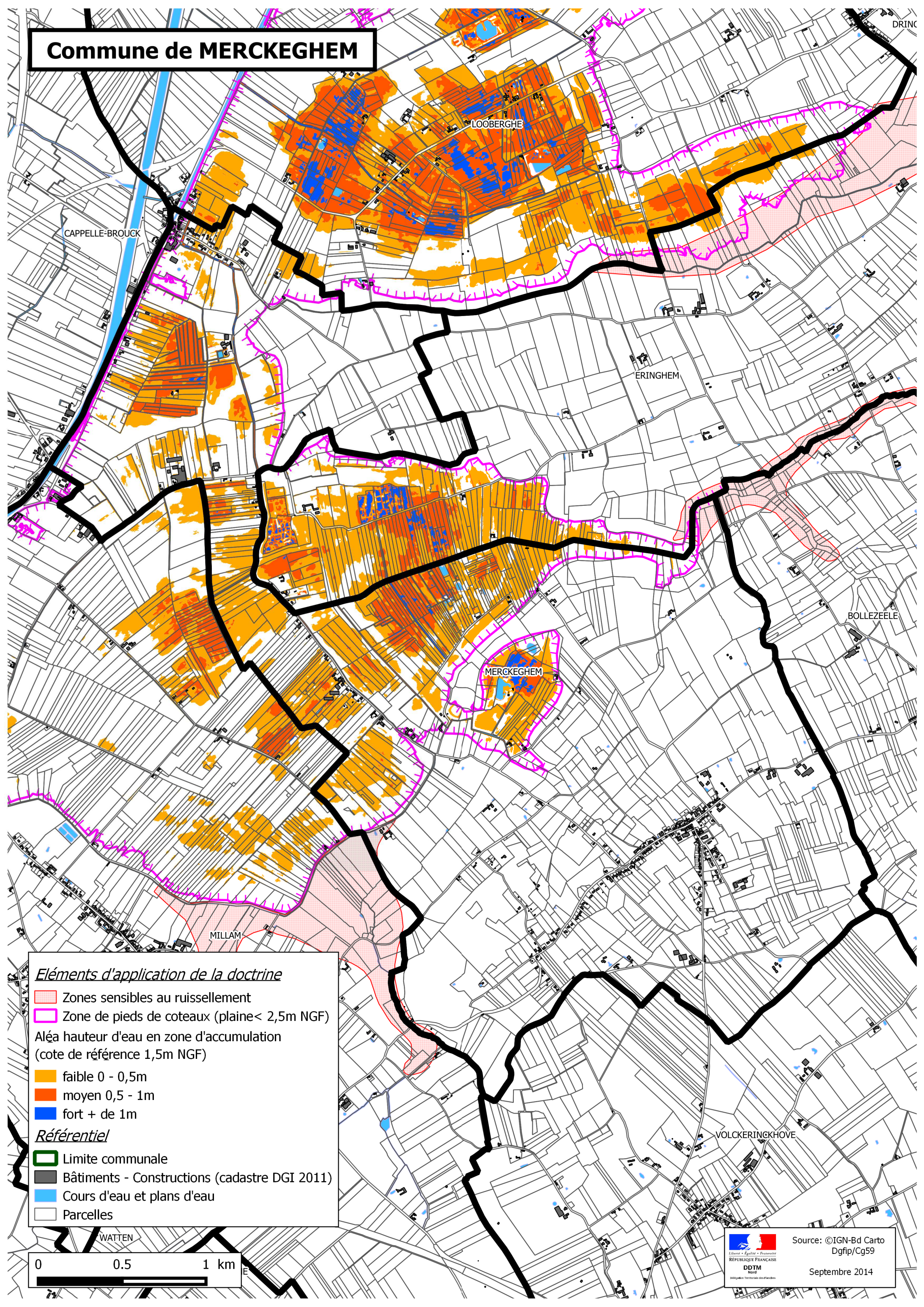







Commune de MERCKEGHEM







Éléments d'application de la doctrine

-  Zones sensibles au ruissellement
 -  Zone de pieds de coteaux (plaine < 2,5m NGF)
- Aléa hauteur d'eau en zone d'accumulation
(cote de référence 1,5m NGF)

-  faible 0 - 0,5m
-  moyen 0,5 - 1m
-  fort + de 1m

Référentiel

-  Limite communale
-  Bâtiments - Constructions (cadastre DGI 2011)
-  Cours d'eau et plans d'eau
-  Parcelles

0 0.5 1 km



Source: ©IGN-Bd Carto
Dgfp/Cg59

Septembre 2014